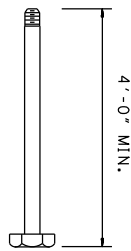
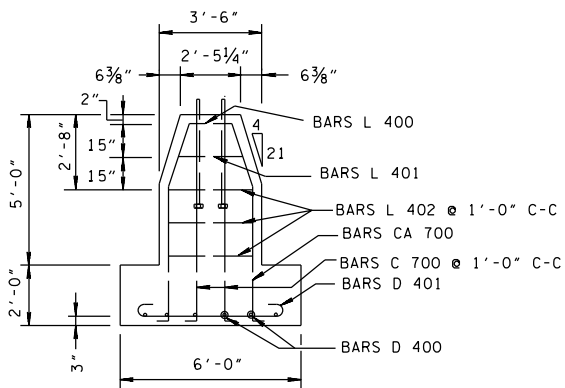
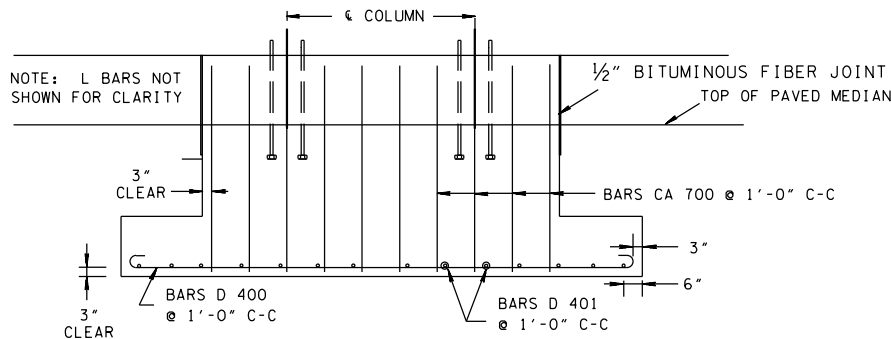
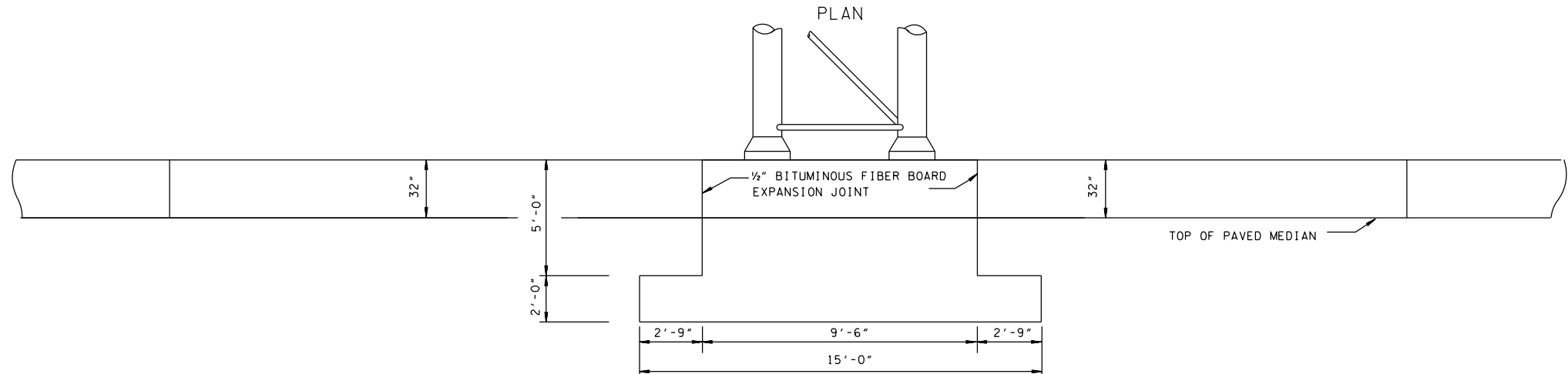
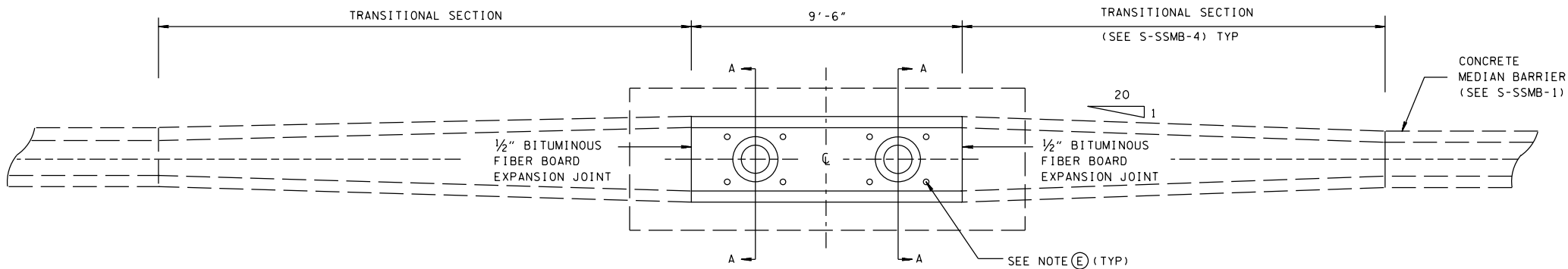
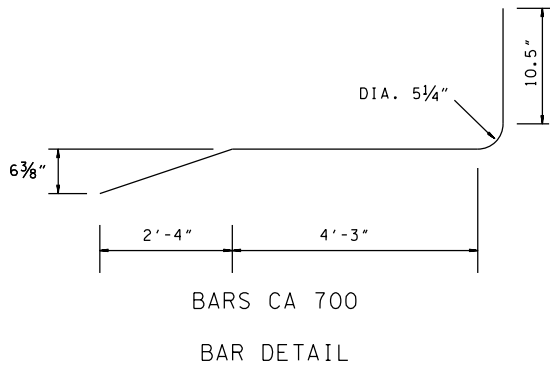
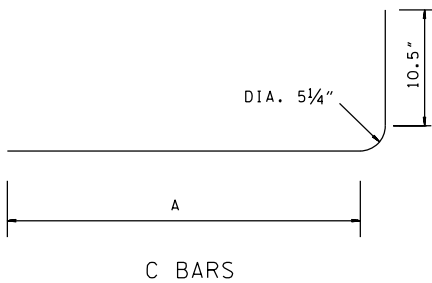
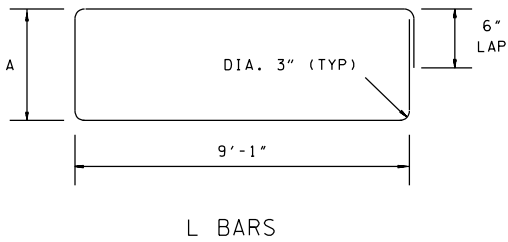
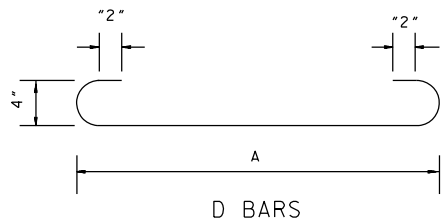


REV. 12-4-13: CHANGED ANCHOR BOLTS TO THREADED.
REV. 5-10-14: REVISED BILL OF STEEL.



ANCHOR BOLT DETAIL
ASTM F1554 ANCHOR BOLTS
(55KSI, HEADED OR THREADED/NUTTED) TO BE DESIGNED
BY SIGN STRUCTURE MANUFACTURER. SEE S-SSMB-8
FOR MIN BEARING AREA OF HEAD OR NUT



BILL OF STEEL - PER FOOTING				
BAR	SIZE	NO. REQ'D.	DIM A	LENGTH
C 700	7	4	6'-6"	7'-8"
CA 700	7	20		7'-9"
D 400	4	6	14'-6"	15'-10"
D 401	4	15	5'-6"	6'-10"
L 400	4	1	2'-4"	23'-0"
L 401	4	1	2'-7 3/4"	23'-11 1/2"
L 402	4	3	3'-2"	25'-0"

QUANTITIES	
CLASS "A" CONCRETE	12.0 C.Y.
REINFORCING STEEL	593 LB.

GENERAL NOTES

- (A) FINISHED CONCRETE SURFACES: CONCRETE FINISHING SHALL BE IN ACCORDANCE WITH SECTION 604.22 OF THE TENNESSEE STANDARD SPECIFICATIONS EXCEPT AS MODIFIED BY THE SPECIAL PROVISION NO. 130 REGARDING SECTION 604-CONCRETE STRUCTURES. A TEXTURED COATED FINISH SHALL BE USED IN LIEU OF A CLASS 2 FINISH. THE COLOR OF THE FINISH SHALL BE SIMILAR TO WHITE FEDERAL SPECIFICATION NO. 37778, A COLOR SAMPLE SHALL BE SUBMITTED TO THE MATERIALS AND TEST ENGINEER FOR APPROVAL.
- (B) EPOXY COATED DOWEL BARS WILL BE PERMITTED AS AN ALTERNATE TO PAINTED AND GREASED DOWEL BARS. THE EPOXY COATING SHALL BE AN APPROVED HIGH DENSITY POLYETHYLENE 17 MILS (\pm 2 MILS) BONDED TO THE BAR WITH AN APPROVED ADHESIVE 1 TO 8 MILS THICK (4 MILS NOMINAL).
- (C) IF A STORM DRAINAGE SYSTEM IS PLACED UNDER THE CENTER LINE OF THE MEDIAN BARRIER, THE PIPE SHALL BE SHIFTED HORIZONTALLY AROUND THE FOOTING.
- (D) OVERHEAD SIGN FOOTING COST IS TO BE INCLUDED IN THE COST OF THE OVERHEAD SIGN STRUCTURE.
- (E) LOCATION OF ANCHOR BOLTS TO BE DETERMINED IN THE FIELD BY THE ENGINEER TO MATCH SIGN STRUCTURE MANUFACTURERS SHOP DRAWING.
- (F) ANCHOR BOLTS, NUTS AND WASHERS ARE TO BE GALVANIZED STEEL.
- (G) CONCRETE: F_c = 4000 POUNDS PER SQUARE INCH AT 28 DAYS.
REINFORCING STEEL: ASTM A615, F_y = 60,000 POUNDS PER SQUARE INCH
ALL REINFORCEMENT IS TO BE INSTALLED AS DETAILED ON THIS DRAWING.

STATE OF TENNESSEE
DEPARTMENT OF TRANSPORTATION

FOOTING DETAILS
FOR OVERHEAD SIGN
STRUCTURE 32"
MEDIAN
BARRIER WALL

2-29-12

S-SSMB-1